



## A/V & Conference Services



\*Images are for demonstrating set-up style only.

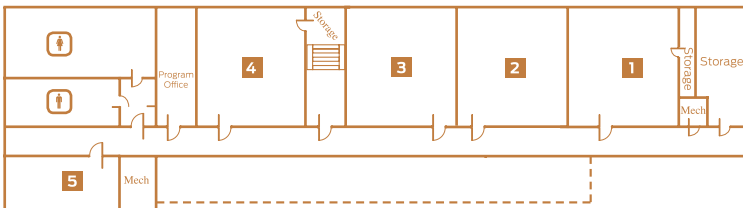
## IVY

ROOMS	ROOM SIZE	CLASSROOM	ROUNDS	THEATER
<b>1 &amp; 4</b>	25' x 27'	36	48	49
<b>2</b>	25' x 23'	36	40	41
<b>3</b>	25' x 29'	27	32	49
<b>5</b>	24' x 32'	36	32	52

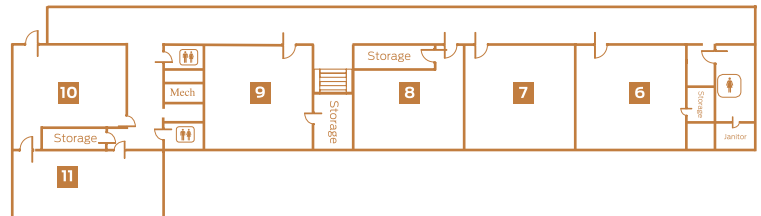
ROOMS	ROOM SIZE	CLASSROOM	ROUNDS	THEATER
<b>6, 7 &amp; 9</b>	22' x 32'	36	48	49
<b>8</b>	28' x 23'	27	32	49
<b>10</b>	21' x 25'	36	32	52
<b>11</b>	24' x 32'	36	32	52

Numbers shown are maximum occupancy per space.

1ST FLOOR



2ND FLOOR



NOTE: Initial room set-up is free. Each subsequent room change is \$100 (+15% service charge).

Audio-Visual Equipment Rentals			
prices are per day and do not include 15% service charge			
Item	Price	Item	Price
PODIUM	N/C	CD PLAYER (DECK)	\$15
EXTENSION CORD	N/C	FLIPCHART W/ EASEL AND MARKERS	\$15
WHITEBOARD WITH MARKERS	N/C	DVD	\$20
PROJECTION SCREEN	\$5	TV	\$20
WIRED MIC WITH STAND & CABLE**	\$10	VIDEO PROJECTOR W/SCREEN	\$50

\*\*Conference space is equipped with 1 wired mic and stand.