



## A/V & Conference Services



Classroom



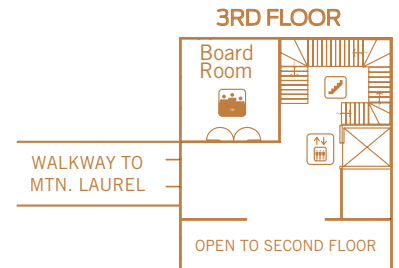
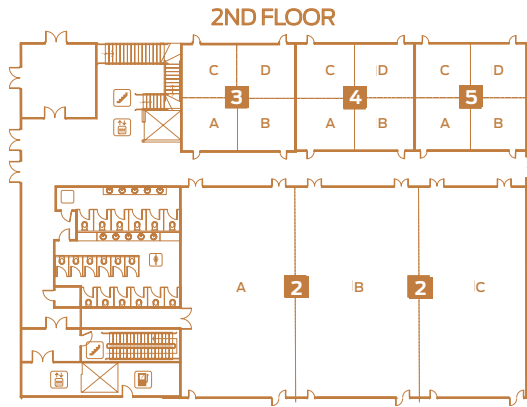
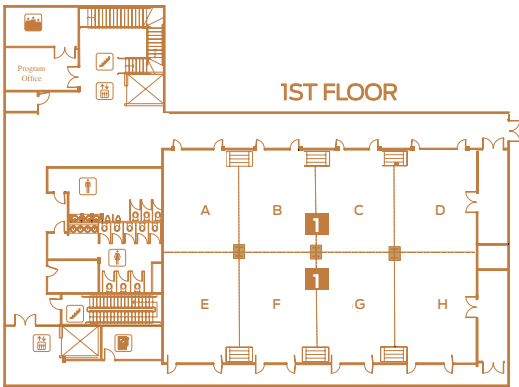
Rounds



Theater

\*Images are for demonstrating set-up style only.

## JOHNSON SPRING



ROOMS	ROOM SIZE	CLASSROOM	ROUNDS	THEATER	ROOMS	ROOM SIZE	CLASSROOM	ROUNDS	THEATER
1 A-H	59'x120'		248	Exhibit Hall	Board Room	23'x18'	Fixed		
1 A-C (each)	29'x27'	27	32	40	2 A-C	63'x120'	396	432	720
1 D	29'x29'	36	32	45	2 A-C (each)	63'x40'	132	144	240
1 E-G (each)	30'x27'	27	32	40	3-5 (each)	40'x40'	60	104	125
1 H	30'x29'	36	32	45	3-5 A-D (each)	20'x20'	12		20

Numbers shown are maximum occupancy per space.

NOTE: Initial room set-up is free. Each subsequent room change is \$100 (+15% service charge).

### Audio-Visual Equipment Rentals

prices are per day and do not include 15% service charge

Item	Price	Item	Price
PODIUM	N/C	CD PLAYER (DECK)	\$15
EXTENSION CORD	N/C	FLIPCHART W/ EASEL AND MARKERS	\$15
WHITEBOARD WITH MARKERS	N/C	DVD	\$20
PROJECTION SCREEN	\$5	TV	\$20
WIRED MIC WITH STAND & CABLE**	\$10	VIDEO PROJECTOR W/SCREEN	\$80

\*\*Conference space is equipped with 1 wired mic and stand.