



A/V & Conference Services

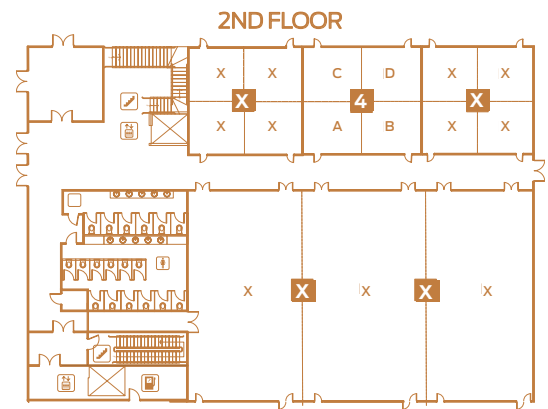


*Images are for demonstrating set-up style only.

JOHNSON SPRING 4

ROOMS	ROOM SIZE	CLASSROOM	ROUNDS	THEATER
4	40'x40'	60	104	125
4 A-D (each)	20'x20'	12		20

Numbers shown are maximum occupancy per space.



NOTE: Initial room set-up is free. Each subsequent room change is \$100 (+15% service charge).

Audio-Visual Equipment Rentals			
prices are per day and do not include 15% service charge			
Item	Price	Item	Price
PODIUM	N/C	CD PLAYER (DECK)	\$15
EXTENSION CORD	N/C	FLIPCHART W/ EASEL AND MARKERS	\$15
WHITEBOARD WITH MARKERS	N/C	DVD	\$20
PROJECTION SCREEN	\$5	TV	\$20
WIRED MIC WITH STAND & CABLE**	\$10	VIDEO PROJECTOR W/SCREEN	\$80

**Conference space is equipped with 1 wired mic and stand.